

2023年3月期
FACT BOOK KEIHAN

2023年5月18日

京阪ホールディングス株式会社

東証プライム市場 9045

<https://www.keihan-holdings.co.jp/>

目 次

「京阪圏」エリアデータ
財務データ(連結)
連結貸借対照表
連結損益計算書及び連結包括利益計算書
連結キャッシュ・フロー計算書
セグメント情報
有利子負債/EBITDA倍率推移(連結)
連結範囲・従業員数(連結)
運輸成績(京阪電気鉄道株)

Table of Contents

“Keihan” Area Data	1
Financial Data (Consolidated)	2
Consolidated Balance Sheet	3
Consolidated Statement of Income and Consolidated Statement of Comprehensive Income	5
Consolidated Statement of Cash Flows	6
Segment Information	7
Trend of Interest-bearing debt / EBITDA Multiple (Consolidated)	11
Scope of Consolidation; Number of Employees (Consolidated)	12
Transportation Statistics (Keihan Electric Railway Co., Ltd.)	13

「京阪圏」エリアデータ
“Keihan” Area Data

(単位: km², 千人)

(Unit: Square kilometers, Thousands of people)

		面積 (Area)	人 口 (Population)											
			1985	1990	1995	2000	2005	2010	2015	2019	2020	2021	2022	2023
大阪市	Osaka City	225.33	2,636	2,624	2,602	2,599	2,629	2,667	2,691	2,740	2,750	2,750	2,756	2,755
守口市	Moriguchi City	12.71	159	157	158	152	147	146	143	142	142	142	141	141
門真市	Kadoma City	12.30	141	142	142	136	132	130	123	119	118	118	117	116
寝屋川市	Neyagawa City	24.70	258	257	260	251	242	238	237	229	228	228	226	226
枚方市	Hirakata City	65.12	382	391	397	403	404	408	404	399	397	395	394	393
交野市	Katano City	25.55	64	65	73	77	78	78	76	76	76	74	74	74
(大阪府下 計)	(Osaka Pref. Total)	365.71	3,640	3,636	3,632	3,618	3,632	3,667	3,674	3,705	3,711	3,707	3,708	3,705
八幡市	Yawata City	24.35	72	76	76	74	74	74	72	70	70	69	69	69
久御山町	Kumiyama Town	13.86	19	18	18	17	17	16	15	15	15	15	14	14
宇治市	Uji City	67.54	165	177	185	189	190	190	184	180	180	178	176	176
京都市	Kyoto City	827.83	1,479	1,461	1,449	1,468	1,475	1,474	1,475	1,466	1,457	1,453	1,448	1,443
(京都府下 計)	(Kyoto Pref. Total)	933.58	1,735	1,732	1,728	1,748	1,756	1,754	1,746	1,731	1,722	1,715	1,707	1,702
大津市	Otsu City	464.51	235	260	279	288	303	335	340	342	342	342	343	345
沿線合計	Keihan area total	1,763.80	5,610	5,628	5,639	5,654	5,691	5,756	5,760	5,778	5,775	5,764	5,758	5,752
滋賀県	Shiga Pref.	4,017.38	1,156	1,222	1,287	1,343	1,380	1,404	1,412	1,413	1,412	1,409	1,408	1,406
京都府	Kyoto Pref.	4,612.20	2,587	2,602	2,630	2,644	2,647	2,637	2,610	2,583	2,568	2,561	2,550	2,541
大阪府	Osaka Pref.	1,905.34	8,668	8,735	8,797	8,805	8,817	8,865	8,839	8,823	8,817	8,807	8,787	8,771
兵庫県	Hyogo Pref.	8,400.95	5,278	5,405	5,402	5,551	5,590	5,594	5,534	5,463	5,438	5,432	5,403	5,387
奈良県	Nara Pref.	3,690.94	1,305	1,375	1,431	1,443	1,421	1,399	1,364	1,331	1,322	1,315	1,305	1,301
和歌山県	Wakayama Pref.	4,724.68	1,087	1,074	1,080	1,070	1,036	998	963	923	914	913	903	898
関西圏 合計	Kansai area total	27,351.49	20,081	20,413	20,627	20,856	20,891	20,897	20,722	20,536	20,471	20,437	20,356	20,304
比率	Keihan area's ratio	6.4%	27.9%	27.6%	27.3%	27.1%	27.2%	27.5%	27.8%	28.1%	28.2%	28.2%	28.3%	28.3%
全国	Japan	377,973.56	121,049	123,611	125,570	126,926	127,756	128,056	127,094	126,167	125,708	125,502	124,947	124,490
全国比率	Keihan area's ratio	0.5%	4.6%	4.6%	4.5%	4.5%	4.5%	4.5%	4.5%	4.6%	4.6%	4.6%	4.6%	4.6%

出典:【人口】国勢調査資料及び総務省・各府県による各年10月現在の推計人口資料。2023年は総務省・各府県による推計人口資料(3月1日現在、概算値)

出典:【面積】国土交通省国土地理院「全国都道府県市区町村別面積調」(2023年1月1日現在)

Source: [Population] Population census data and population estimates by the Ministry of Internal Affairs and Communication and prefectural governments as of October each year.

For 2023, population estimates by the Ministry of Internal Affairs and Communication and prefectural governments (Approximate figures as of March 1. (*))

[Area] "Areas of Municipalities and Prefectures of Japan" by the Geospatial Information Authority of Japan of the Ministry of Land, Infrastructure, Transport and Tourism (as of January 1, 2023)

財務データ(連結) Financial Data (Consolidated)

(単位:百万円)
(Unit: Millions of yen)

	2014/3	2015/3	2016/3	2017/3	2018/3	2019/3	2020/3	2021/3	2022/3	2023/3
営業収益 Operating revenue	289,203	294,906	300,188	302,917	322,276	326,159	317,103	253,419	258,118	260,070
営業利益 Operating income	25,085	29,437	31,524	32,343	31,458	33,715	31,123	△ 1,265	13,408	20,491
経常利益 Ordinary income	21,457	27,435	28,461	30,335	29,630	32,108	29,886	238	16,485	20,458
親会社株主に帰属する当期純利益 Profit attributable to owners of parent	14,420	17,864	22,385	22,636	22,712	21,480	20,121	△ 4,574	9,589	17,621
総資産 Total assets	671,182	664,236	670,333	679,631	*2 698,786	731,750	732,824	764,247	737,261	774,849
純資産 Net assets	169,864	190,513	191,790	203,455	223,559	238,695	254,058	248,595	255,876	273,510
有利子負債 Interest-bearing debt	321,044	311,010	325,714	314,539	316,399	334,346	327,132	351,600	345,311	341,625
設備投資額 Capital expenditure	31,179	15,878	31,398	39,173	39,745	43,631	29,324	33,261	17,193	29,712
減価償却費 Depreciation	16,603	17,107	17,571	18,074	19,113	19,819	20,784	21,232	20,922	20,028
営業活動によるキャッシュ・フロー Cash flows from operating activities	29,573	21,459	36,334	38,569	44,438	36,473	32,033	15,282	21,673	16,932
投資活動によるキャッシュ・フロー Cash flows from investing activities	△ 15,132	△ 4,473	△ 27,750	△ 29,597	△ 32,603	△ 48,059	△ 26,363	△ 24,940	△ 17,641	△ 13,109
フリーキャッシュ・フロー Free cash flow	14,441	16,985	8,584	8,971	11,835	△ 11,586	5,670	△ 9,658	4,032	3,822
財務活動によるキャッシュ・フロー Cash flows from financing activities	△ 11,412	△ 16,275	△ 5,768	△ 20,020	△ 9,858	12,655	△ 12,138	21,301	△ 10,264	△ 7,435
現金及び現金同等物の増減額 Net Increase (decrease) in cash and cash equivalents	3,028	710	2,816	△ 11,048	1,976	1,069	△ 6,468	11,643	△ 6,232	△ 3,612
現金及び現金同等物の期末残高 Cash and cash equivalents at end of period	25,831	26,552	29,372	18,324	20,300	21,377	14,911	26,554	20,322	16,727
1株当たり当期純利益(円)*1 Earnings per share (yen)*1	25.65	31.78	39.95	211.01	211.87	200.40	187.72	△ 42.68	89.47	164.38
潜在株式調整後1株当たり当期純利益(円)*1 Diluted earnings per share (yen)*1	—	—	—	211.00	211.85	200.36	187.68	—	89.44	164.34
1株当たり純資産(円)*1 Net assets per share (yen)*1	297.08	334.67	349.13	1,870.99	2,055.87	2,193.68	2,329.94	2,279.47	2,343.97	2,502.22
1株当たり配当額(円)*1 Dividend per share (yen)*1	6.00	6.00	6.00	30.00	35.00	35.00	35.00	25.00	25.00	30.00
自己資本当期純利益率(ROE)(%) Return on equity (ROE) (%)	8.9	10.1	11.9	11.6	10.8	9.4	8.3	△ 1.9	3.9	6.8
総資産営業利益率(ROA)(%) Return on assets (ROA) (%)	3.8	4.4	4.7	4.8	*2 4.6	4.7	4.3	△ 0.2	1.8	2.7
自己資本比率(%) Capital adequacy ratio (%)	24.9	28.3	28.2	29.5	*2 31.5	32.1	34.1	32.0	34.1	34.6
有利子負債/EBITDA倍率(倍) Interest-bearing debt / EBITDA multiple (Times)	7.7	6.7	6.6	6.2	6.3	6.3	6.3	17.6	10.1	8.4
ネット有利子負債/EBITDA倍率(倍) Net interest-bearing debt / EBITDA multiple (Times)	7.1	6.1	6.1	5.9	5.9	5.9	6.0	16.3	9.5	8.0

*1 2017年10月1日付で普通株式5株につき1株の割合で株式併合を行っており、前期の期首に当該株式併合が行われたと仮定して、1株当たり当期純利益、潜在株式調整後1株当たり当期純利益、1株当たり純資産、1株当たり配当額を算定しております。

Keihan Holdings Co., Ltd. has conducted a consolidation of common shares at a rate of one share for every five shares with an effective date of October 1, 2017.

Earnings per share, diluted earnings per share, net assets per share and dividend per share have been calculated as if this consolidation of shares was conducted at the beginning of the previous fiscal year.

*2 「『税効果会計に係る会計基準』の一部改正」(企業会計基準第28号 2018年2月16日)等の適用に伴い、総資産・総資産営業利益率・自己資本比率は当該会計基準等を遡及適用した数値となっております。

Accompanying the application of "Partial Amendments to Accounting Standard for Tax Effect Accounting" (Accounting Standards Board of Japan, Statement No. 28, February 16, 2018), etc., the figures for Total assets, Return on assets and Capital adequacy ratio have been restated.

連結貸借対照表(資産の部) Consolidated Balance Sheet (Assets)

(単位:百万円)
(Unit: Millions of yen)

	2014/3	2015/3	2016/3	2017/3	2018/3	2019/3	2020/3	2021/3	2022/3	2023/3
流動資産 Current assets	147,216	171,449	168,510	157,655	168,266	180,080	177,016	197,185	186,794	217,002
現金及び預金 Cash and deposits	25,880	26,600	25,072	18,372	20,317	21,385	14,918	26,561	20,327	16,784
受取手形及び売掛金 Notes and accounts receivable - trade	24,603	30,892	23,702	25,760	31,199	31,189	21,947	23,859	—	—
受取手形、売掛金及び契約資産 Notes and accounts receivable - trade, and contract assets	—	—	—	—	—	—	—	—	—	36,058
有価証券 Securities	860	352	2,188	70	51	809	2,178	784	1,432	75
販売土地及び建物 Land and buildings for sale	83,075	101,243	100,742	99,541	105,070	112,710	123,881	133,883	126,863	147,347
商品 Merchandise	1,729	1,894	1,976	1,878	1,772	1,813	1,836	1,590	1,430	1,538
繰延税金資産 Deferred tax assets	2,855	2,614	2,533	2,670	—	—	—	—	—	—
その他 Other	8,430	8,110	12,565	9,970	10,099	12,440	12,617	11,181	11,907	15,583
貸倒引当金 Allowance for doubtful accounts	△ 218	△ 260	△ 270	△ 609	△ 243	△ 267	△ 364	△ 675	△ 295	△ 385
固定資産 Non-current assets	523,965	492,787	501,822	521,976	530,519	551,669	555,808	567,062	550,466	557,846
有形固定資産 Property, plant and equipment	457,887	418,141	441,247	456,920	455,624	473,522	479,049	487,152	481,726	486,638
建物及び構築物 Building and structures	190,767	187,950	198,994	198,409	193,388	207,375	222,247	218,630	213,445	206,386
機械装置及び運搬具 Machinery, equipment and vehicles	11,604	12,979	13,466	16,575	16,672	17,686	17,412	19,987	19,553	17,163
土地 Land	219,359	206,616	213,810	222,847	217,866	218,789	223,746	226,675	230,941	231,271
リース資産 Lease assets	5,870	5,370	5,150	4,249	4,540	4,964	4,817	4,482	4,065	10,537
建設仮勘定 Construction in progress	26,917	2,119	6,076	10,623	19,065	19,272	5,477	12,851	10,267	18,010
その他 Other	3,367	3,105	3,747	4,215	4,091	5,433	5,349	4,524	3,452	3,268
無形固定資産 Intangible assets	8,043	8,820	8,245	8,044	9,267	9,210	8,576	8,065	7,218	7,476
投資その他の資産 Investments and other assets	58,034	65,825	52,329	57,011	65,627	68,937	68,182	71,843	61,521	63,731
投資有価証券 Investment securities	38,569	47,358	39,959	38,229	43,676	45,362	44,680	44,762	42,001	45,142
長期貸付金 Long-term loans receivable	388	388	388	682	689	539	411	284	242	198
繰延税金資産 Deferred tax assets	2,483	1,656	2,208	7,209	*1 9,500	9,904	10,163	12,087	5,369	4,104
退職給付に係る資産 Net defined benefit asset	553	1,464	21	266	704	1,072	598	1,567	1,605	1,705
その他 Other	16,097	15,033	9,811	10,843	11,340	12,331	12,614	13,318	12,464	12,731
貸倒引当金 Allowance for doubtful accounts	△ 57	△ 75	△ 59	△ 219	△ 283	△ 272	△ 286	△ 177	△ 160	△ 149
資産合計 Total assets	671,182	664,236	670,333	679,631	*2 698,786	731,750	732,824	764,247	737,261	774,849

*1 『税効果会計に係る会計基準』の一部改正(企業会計基準第28号 2018年2月16日)等の適用に伴い、繰延税金資産(流動資産)は投資その他の資産(固定資産)に組替えて表示しております。

Accompanying the application of "Partial Amendments to Accounting Standard for Tax Effect Accounting" (Accounting Standards Board of Japan, Statement No. 28, February 16, 2018), etc., Deferred tax assets previously recorded under Current assets are included under Investments and other assets.

*2 『税効果会計に係る会計基準』の一部改正(企業会計基準第28号 2018年2月16日)等の適用に伴い、総資産は当該会計基準等を遡及適用した数値となっております。

Accompanying the application of "Partial Amendments to Accounting Standard for Tax Effect Accounting" (Accounting Standards Board of Japan, Statement No. 28, February 16, 2018), etc., the figures for Total assets have been restated.

連結貸借対照表(負債・純資産の部) Consolidated Balance Sheet (Liabilities and Net Assets)

(単位:百万円)
(Unit: Millions of yen)

	2014/3	2015/3	2016/3	2017/3	2018/3	2019/3	2020/3	2021/3	2022/3	2023/3
流動負債 Current Liabilities	179,858	192,141	152,337	136,217	161,600	178,310	167,695	165,893	127,477	148,777
支払手形及び買掛金 Notes and accounts payable – trade	11,258	11,404	10,775	11,248	11,588	11,544	9,450	9,639	10,020	10,137
短期借入金 Short-term loans payable	78,823	106,105	68,780	65,363	80,202	96,076	75,224	72,662	60,320	53,608
短期社債 Short-term bonds payable	—	—	5,000	—	—	—	7,999	5,000	—	—
1年内償還予定の社債 Current portion of bonds	10,331	10,251	10,245	45	10,045	10,045	20,039	10,000	10,000	20,000
未払法人税等 Income taxes payable	4,995	4,191	5,619	5,990	4,524	5,505	4,187	6,377	3,777	3,751
繰延税金負債 Deferred tax liabilities	0	2	1	—	—	—	—	—	—	—
前受金 Advances received	25,031	10,207	8,011	6,979	7,521	8,439	6,293	12,997	8,717	10,178
賞与引当金 Provision for bonuses	2,793	2,637	2,667	2,630	2,555	2,867	2,971	2,429	2,569	2,882
商品券等引換損失引当金 Provision for loss on unused gift certificate	355	384	407	508	565	634	702	780	—	—
その他 Other	46,267	46,956	40,829	43,450	44,596	43,196	40,827	46,006	32,072	48,218
固定負債 Non-current liabilities	321,459	281,581	326,204	339,959	*2 313,626	314,744	311,069	349,758	353,907	352,560
社債 Bonds payable	70,655	60,403	80,257	90,191	80,125	90,059	80,000	100,000	100,000	80,000
長期借入金 Long-term loans payable	159,857	134,234	161,430	158,938	146,026	138,164	143,869	163,937	174,990	188,016
長期未払金 Long-term accounts payable – other	785	253	654	685	536	442	369	344	226	132
リース債務 Lease obligations	4,533	4,175	4,164	3,807	4,102	4,267	4,079	4,027	3,531	10,554
繰延税金負債 Deferred tax liabilities	8,646	9,349	7,944	11,236	*1 10,915	9,110	8,825	9,299	3,433	3,465
再評価に係る繰延税金負債 Deferred tax liabilities for land revaluation	36,184	32,715	31,087	33,168	33,137	33,047	33,046	32,524	32,499	32,475
役員退職慰労引当金 Provision for directors' retirement benefits	673	620	447	437	345	297	228	179	143	127
退職給付に係る負債 Net defined benefit liability	19,121	19,665	18,933	20,011	18,790	18,360	19,093	18,036	17,593	16,842
その他 Other	21,002	20,164	21,284	21,482	19,646	20,994	21,556	21,408	21,490	20,945
負債合計 Total liabilities	501,318	473,722	478,542	476,176	*2 475,226	493,055	478,765	515,652	481,384	501,338
株主資本 Shareholders' equity	126,535	139,314	142,165	157,060	176,033	193,189	209,545	204,263	210,627	225,673
資本金 Capital stock	51,466	51,466	51,466	51,466	51,466	51,466	51,466	51,466	51,466	51,466
資本剰余金 Capital surplus	28,819	28,819	28,794	28,782	28,787	28,789	28,792	28,792	28,796	28,792
利益剰余金 Retained earnings	47,700	60,525	79,103	98,392	117,384	134,559	150,926	145,660	152,007	166,989
自己株式 Treasury shares	△ 1,451	△ 1,497	△ 17,199	△ 21,580	△ 21,603	△ 21,626	△ 21,640	△ 21,656	△ 21,643	△ 21,574
その他の包括利益累計額 Accumulated other comprehensive income	40,473	48,801	46,962	43,509	44,341	41,946	40,191	40,055	40,612	42,575
その他有価証券評価差額金 Valuation difference on available-for-sale securities	10,966	15,187	12,221	11,266	10,787	8,191	6,648	5,965	5,967	7,021
土地再評価差額金 Revaluation reserve for land	32,008	35,496	37,557	35,584	36,088	36,373	36,375	35,191	35,060	35,031
為替換算調整勘定 Foreign currency translation adjustment	—	—	—	△ 2	6	△ 20	71	△ 4	△ 12	72
退職給付に係る調整累計額 Remeasurements of defined benefit plans	△ 2,501	△ 1,881	△ 2,815	△ 3,338	△ 2,540	△ 2,597	△ 2,904	△ 1,096	△ 403	449
新株予約権 Subscription rights to shares	—	—	—	27	44	75	110	144	121	121
非支配株主持分 Non-controlling interests	2,855	2,398	2,662	2,857	3,139	3,484	4,212	4,132	4,514	5,139
純資産合計 Total net assets	169,864	190,513	191,790	203,455	223,559	238,695	254,058	248,595	255,876	273,510
負債純資産合計 Total liabilities and net assets	671,182	664,236	670,333	679,631	*2 698,786	731,750	732,824	764,247	737,261	774,849

*1 「『税効果会計に係る会計基準』の一部改正」(企業会計基準第28号 2018年2月16日)等の適用に伴い、繰延税金負債(流動負債)は固定負債に組替えて表示しております。

Accompanying the application of "Partial Amendments to Accounting Standard for Tax Effect Accounting" (Accounting Standards Board of Japan, Statement No. 28, February 16, 2018), etc., Deferred tax liabilities previously recorded under Current Liabilities are included under Non-current liabilities.

*2 「『税効果会計に係る会計基準』の一部改正」(企業会計基準第28号 2018年2月16日)等の適用に伴い、負債合計は当該会計基準等を遡及適用した数値となっております。

Accompanying the application of "Partial Amendments to Accounting Standard for Tax Effect Accounting" (Accounting Standards Board of Japan, Statement No. 28, February 16, 2018), etc., the figures for Total liabilities have been restated.

連結損益計算書 Consolidated statement of income

(単位:百万円)
(Unit: Millions of yen)

	2014/3	2015/3	2016/3	2017/3	2018/3	2019/3	2020/3	2021/3	2022/3	2023/3
営業収益 Operating revenue	289,203	294,906	300,188	302,917	322,276	326,159	317,103	253,419	258,118	260,070
営業費 Operating expenses	264,118	265,468	268,663	270,573	290,817	292,443	285,979	254,684	244,710	239,578
運輸業等営業費及び売上原価 Operating expenses and cost of sales of transportation	238,013	238,680	240,069	232,252	248,780	249,885	241,547	212,795	204,258	196,516
販売費及び一般管理費 Selling, general and administrative expenses	26,104	26,788	28,594	38,320	42,037	42,558	44,432	41,889	40,452	43,061
営業利益 Operating income	25,085	29,437	31,524	32,343	31,458	33,715	31,123	△ 1,265	13,408	20,491
営業外収益 Non-operating income	1,578	2,809	2,145	2,050	1,971	2,016	2,083	5,032	5,820	2,467
受取利息 Interest income	14	13	42	56	65	56	53	42	35	31
受取配当金 Dividend income	557	632	747	793	788	880	946	566	429	504
持分法による投資利益 Share of profit of entities accounted for using equity method	—	1,177	21	—	—	—	—	143	103	83
雑収入 Miscellaneous income	1,006	985	1,333	1,199	1,117	1,079	1,083	4,280	5,252	1,847
営業外費用 Non-operating expenses	5,206	4,811	5,208	4,058	3,800	3,623	3,320	3,528	2,742	2,500
支払利息 Interest expenses	4,276	3,931	3,581	2,802	2,561	2,401	2,189	2,086	2,007	1,877
持分法による投資損失 Share of loss of entities accounted for using equity method	14	—	—	16	59	85	99	—	—	—
雑支出 Miscellaneous expenses	915	880	1,627	1,239	1,179	1,136	1,032	1,442	734	622
経常利益 Ordinary income	21,457	27,435	28,461	30,335	29,630	32,108	29,886	238	16,485	20,458
特別利益 Extraordinary income	2,805	21,279	8,239	5,403	6,626	4,312	3,920	5,331	4,199	9,806
工事負担金等受入額 Contribution for construction	201	18,617	842	292	516	318	658	117	311	181
補助金 Subsidy	1,315	1,144	1,680	1,417	1,473	1,366	1,183	1,373	1,677	2,187
固定資産売却益 Gain on sales of non-current assets	608	1,164	426	306	284	324	151	176	244	4,650
投資有価証券売却益 Gain on sales of investment securities	631	11	348	2,776	916	1,922	827	3,406	1,005	—
負ののれん発生益 Gain on bargain purchase	—	340	4,709	—	—	—	—	—	—	—
その他 Other	48	—	230	610	3,436	380	1,099	256	960	2,787
特別損失 Extraordinary losses	1,498	22,075	4,630	4,036	2,572	4,372	2,592	4,592	2,684	3,779
固定資産圧縮損 Loss on reduction of non-current assets	826	18,401	1,475	911	1,042	862	1,312	473	734	848
減損損失 Impairment loss	91	1,712	61	1,359	61	1,333	505	2,560	314	938
固定資産除却損 Loss on retirement of non-current assets	241	284	937	1,303	995	1,194	764	283	1,278	1,451
固定資産売却損 Loss on sales of non-current assets	239	1,615	0	0	—	—	—	—	—	—
段階取得に係る差損 Loss on step acquisitions	—	—	2,119	—	—	—	—	—	—	—
その他 Other	98	61	36	461	472	981	9	1,274	357	541
税金等調整前当期純利益 Profit before income taxes	22,765	26,640	32,069	31,702	33,684	32,048	31,214	977	18,000	26,485
法人税、住民税及び事業税 Income taxes - current	8,295	8,038	9,094	10,255	10,701	11,322	10,602	8,137	7,402	7,906
法人税等調整額 Income taxes - deferred	△ 173	527	274	△ 1,401	△ 27	△ 1,160	221	△ 2,521	617	341
当期純利益 Profit	14,643	18,074	22,699	22,848	23,009	21,886	20,390	△ 4,637	9,981	18,237
非支配株主に帰属する当期純利益 Profit attributable to non-controlling interests	223	209	313	212	297	405	269	△ 63	391	615
親会社株主に帰属する当期純利益 Profit attributable to owners of parent	14,420	17,864	22,385	22,636	22,712	21,480	20,121	△ 4,574	9,589	17,621

連結包括利益計算書 Consolidated statement of comprehensive income

(単位:百万円)
(Unit: Millions of yen)

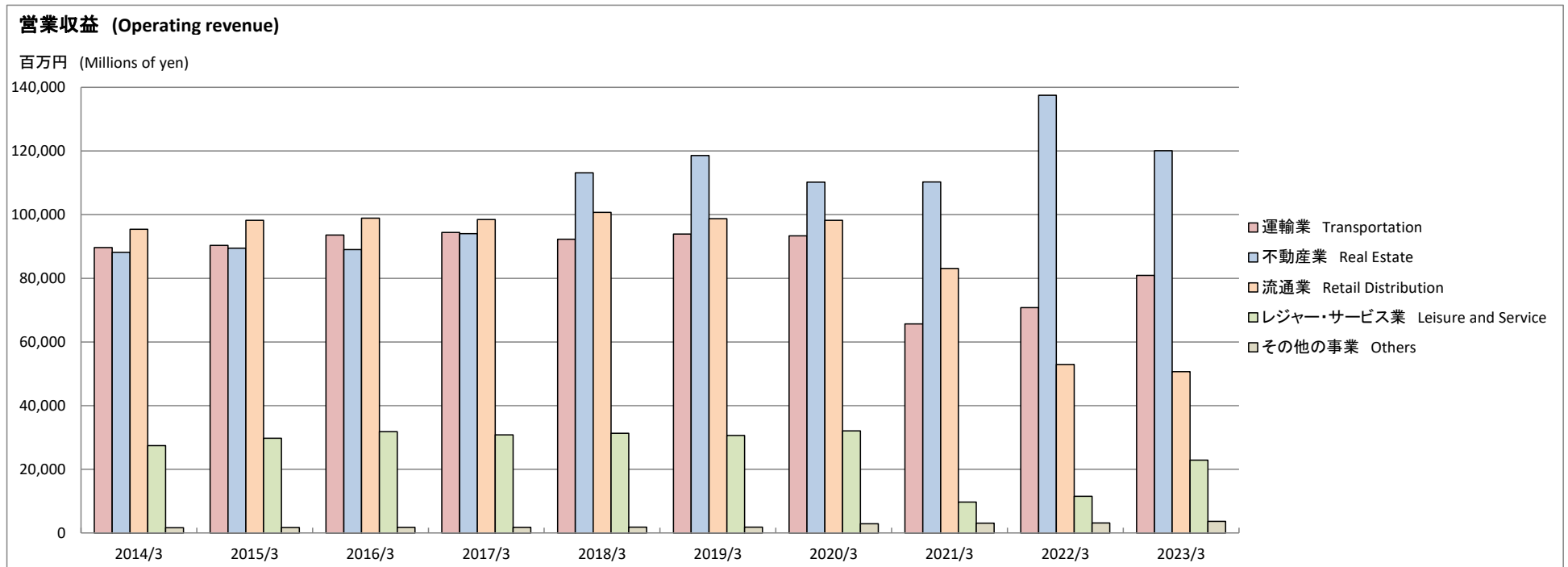
	2014/3	2015/3	2016/3	2017/3	2018/3	2019/3	2020/3	2021/3	2022/3	2023/3
当期純利益 Profit	14,643	18,074	22,699	22,848	23,009	21,886	20,390	△ 4,637	9,981	18,237
その他の包括利益 Other comprehensive income	2,545	8,306	△ 2,289	△ 3,554	349	△ 2,710	△ 1,757	1,058	684	1,998
その他有価証券評価差額金 Valuation difference on available-for-sale securities	2,545	4,230	△ 2,981	△ 941	△ 456	△ 2,627	△ 1,543	△ 673	△ 0	1059
土地再評価差額金 Revaluation reserve for land	—	3,456	1,625	△ 2,087	—	—	—	—	—	—
退職給付に係る調整額 Remeasurements of defined benefit plans, net of tax	—	619	△ 934	△ 522	797	△ 56	△ 307	1,808	693	853
持分法適用会社に対する持分相当額 Share of comprehensive income of affiliates accounted for using equity method	—	—	—	△ 2	8	△ 27	92	△ 76	△ 7	85
包括利益 Comprehensive income	17,188	26,380	20,409	19,294	23,359	19,175	18,633	△ 3,579	10,665	20,236

連結キャッシュ・フロー計算書 Consolidated Statement of Cash Flows

(単位:百万円)
(Unit: Millions of yen)

	2014/3	2015/3	2016/3	2017/3	2018/3	2019/3	2020/3	2021/3	2022/3	2023/3
営業活動によるキャッシュ・フロー Cash flows from operating activities	29,573	21,459	36,334	38,569	44,438	36,473	32,033	15,282	21,673	16,932
税金等調整前当期純利益 Profit before income taxes	22,765	26,640	32,069	31,702	33,684	32,048	31,214	977	18,000	26,485
減価償却費 Depreciation	16,603	17,107	17,571	18,074	19,113	19,819	20,784	20,948	20,840	20,028
棚卸資産の増減額(△は増加) Decrease (increase) in inventories	△ 4,636	△ 18,235	342	1,260	8,159	△ 7,042	△ 11,562	△ 10,188	8,010	△ 20,531
その他 Other, net	6,636	8,109	△ 3,006	△ 232	△ 2,567	3,406	4,681	9,554	△ 15,534	△ 138
小計 Subtotal	41,369	33,622	46,977	50,805	58,388	48,232	45,117	21,291	31,316	25,844
利息及び配当金の受取額 Interest and dividend income received	596	670	837	852	854	939	1,000	643	623	589
利息の支払額 Interest expenses paid	△ 4,321	△ 3,970	△ 3,604	△ 2,855	△ 2,628	△ 2,394	△ 2,188	△ 2,080	△ 2,036	△ 1,938
法人税等の支払額 Income taxes paid	△ 8,070	△ 8,863	△ 7,874	△ 10,147	△ 12,175	△ 10,303	△ 11,896	△ 5,705	△ 9,912	△ 8,092
特別退職金の支払額 Extra retirement payments	—	—	—	△ 85	—	—	—	—	—	—
その他 Other, net	—	—	—	—	—	—	—	1,133	1,681	528
投資活動によるキャッシュ・フロー Cash flows from investing activities	△ 15,132	△ 4,473	△ 27,750	△ 29,597	△ 32,603	△ 48,059	△ 26,363	△ 24,940	△ 17,641	△ 13,109
固定資産の取得による支出 Purchase of non-current assets	△ 26,425	△ 19,912	△ 28,696	△ 34,079	△ 41,018	△ 43,329	△ 24,953	△ 28,512	△ 21,438	△ 19,864
固定資産の売却による収入 Proceeds from sales of non-current assets	7,295	16,349	930	466	8,637	502	275	385	343	7,047
工事負担金等受入による収入 Proceeds from contribution received for construction	1,925	1,176	1,315	496	140	315	588	450	171	680
投資有価証券の取得による支出 Purchase of investment securities	△ 1,077	△ 2,335	△ 2,111	△ 1,630	△ 5,251	△ 5,867	△ 3,202	△ 3,117	△ 2,230	△ 2,569
投資有価証券の売却による収入 Proceeds from sales of investment securities	2,521	20	349	5,357	1,022	2,353	1,790	5,420	1,243	—
連結の範囲の変更を伴う子会社株式の取得による支出 Purchase of shares of subsidiaries resulting in change in scope of consolidation	—	△ 52	—	—	—	—	—	—	—	—
連結の範囲の変更を伴う子会社株式の取得による収入 Proceeds from purchase of shares of subsidiaries resulting in change in scope of consolidation	—	—	—	—	490	—	—	—	—	—
連結の範囲の変更を伴う子会社株式の売却による収入 Proceeds from sales of shares of subsidiaries resulting in change in scope of consolidation	—	—	—	—	2,826	—	—	—	—	—
関係会社出資金の払込による支出 Payment of investments in capital of subsidiaries and associates	—	—	—	—	—	—	—	—	—	—
関係会社株式の有償減資による収入 Proceeds from capital reduction of affiliates	—	—	—	—	—	—	—	—	1,360	191
その他 Other, net	629	280	463	△ 208	548	△ 2,033	△ 861	432	2,908	1,404
財務活動によるキャッシュ・フロー Cash flows from financing activities	△ 11,412	△ 16,275	△ 5,768	△ 20,020	△ 9,858	12,655	△ 12,138	21,301	△ 10,264	△ 7,435
短期借入金の純増減額(△は減少) Net increase (decrease) in short-term loans payable	△ 2,892	2,726	△ 10,701	△ 7,995	△ 1,655	2,400	△ 6,894	631	△ 4,658	4,551
短期社債の純増減額(△は減少) Net increase (decrease) in short-term bonds payable	△ 1,000	—	5,000	△ 5,000	—	—	7,999	△ 2,998	△ 5,000	—
長期借入れによる収入 Proceeds from long-term loans payable	23,286	26,223	75,672	31,867	30,781	44,923	38,670	48,457	33,370	24,430
長期借入金の返済による支出 Repayments of long-term loans payable	△ 23,202	△ 28,156	△ 75,099	△ 29,781	△ 34,595	△ 39,310	△ 46,922	△ 31,582	△ 30,082	△ 22,666
社債の発行による収入 Proceeds from issuance of bonds	9,934	—	29,938	9,936	—	19,862	9,923	29,843	9,938	—
社債の償還による支出 Redemption of bonds	△ 10,376	△ 10,331	△ 10,251	△ 10,245	△ 45	△ 10,045	△ 10,045	△ 20,024	△ 10,000	△ 10,000
長期未払金の返済による支出 Payments of long-term accounts payable - other	△ 2,730	△ 1,401	△ 15	—	—	—	—	—	—	—
配当金の支払額 Cash dividends paid	△ 2,812	△ 3,651	△ 3,372	△ 3,235	△ 3,218	△ 4,012	△ 3,748	△ 1,888	△ 2,681	△ 2,681
自己株式の取得による支出 Purchase of treasury shares	△ 93	△ 47	△ 15,703	△ 4,381	△ 36	△ 23	△ 22	△ 16	△ 7	△ 8
その他 Other, net	△ 1,525	△ 1,637	△ 1,234	△ 1,185	△ 1,086	△ 1,138	△ 1,096	△ 1,120	△ 1,142	△ 1,058
現金及び現金同等物に係る換算差額 Effect of exchange rate changes on cash and cash equivalents	—	—	—	—	—	—	—	—	—	0
現金及び現金同等物の増減額 Net increase (decrease) in cash and cash equivalents	3,028	710	2,816	△ 11,048	1,976	1,069	△ 6,468	11,643	△ 6,232	△ 3,612
現金及び現金同等物の期首残高 Cash and cash equivalents at beginning of period	22,802	25,831	26,552	29,372	18,324	20,300	21,377	14,911	26,554	20,322
新規連結に伴う現金及び現金同等物の増加額 Increase in cash and cash equivalents from newly consolidated subsidiary	—	—	—	—	—	7	2	—	—	—
非連結子会社との合併に伴う現金及び現金同等物の増加額 Increase in cash and cash equivalents resulting from merger with unconsolidated subsidiaries	—	10	4	—	—	—	—	—	—	17
現金及び現金同等物の期末残高 Cash and cash equivalents at end of period	25,831	26,552	29,372	18,324	20,300	21,377	14,911	26,554	20,322	16,727

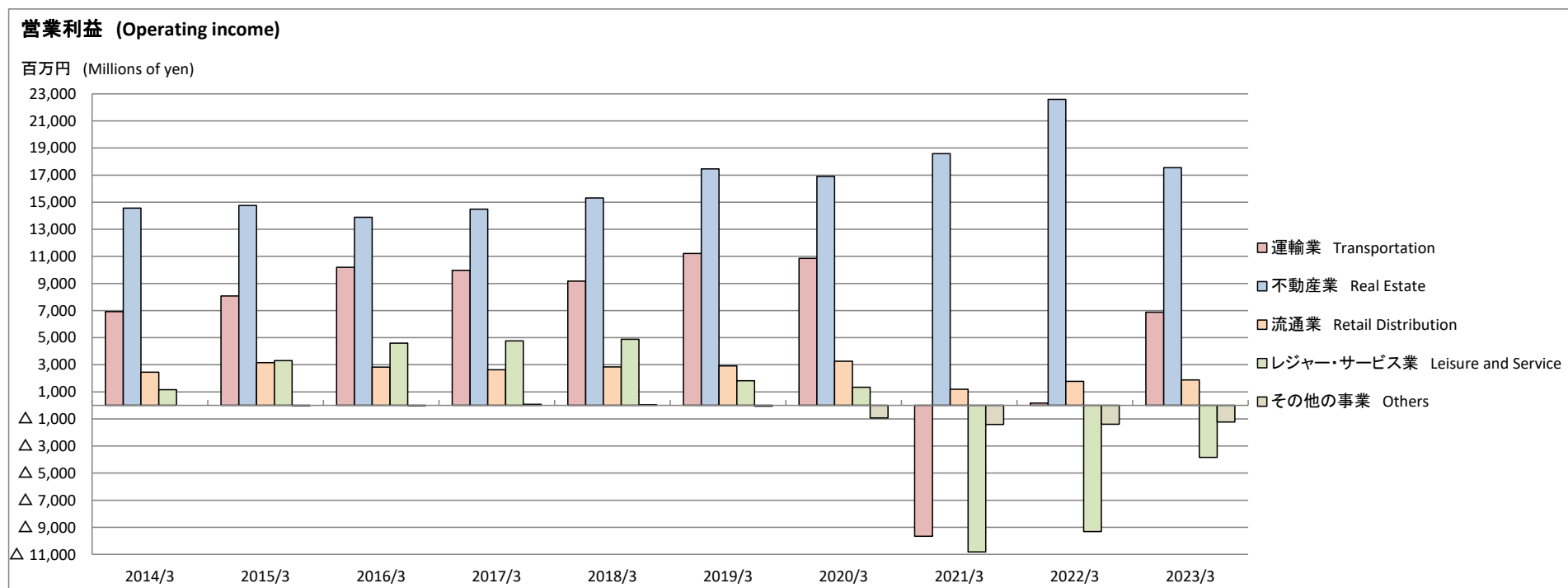
セグメント情報① Segment Information (1)



(単位: 百万円)
(Unit: Millions of yen)

	2014/3	2015/3	2016/3	2017/3	2018/3	2019/3	2020/3	2021/3	2022/3	2023/3
営業収益 Operating revenue	289,203	294,906	300,188	302,917	322,276	326,159	317,103	253,419	258,118	260,070
運輸業 Transportation	89,661	90,341	93,562	94,404	92,262	93,926	93,365	65,694	70,768	80,927
不動産業 Real Estate	88,179	89,454	89,033	94,014	113,132	118,607	110,228	110,270	137,495	120,103
流通業 Retail Distribution	95,427	98,200	98,875	98,493	100,709	98,727	98,186	83,109	52,908	50,676
レジャー・サービス業 Leisure and Service	27,423	29,761	31,813	30,801	31,298	30,621	32,081	9,724	11,529	22,869
その他の事業 Others	1,637	1,707	1,755	1,792	1,824	1,843	2,908	3,061	3,169	3,660
消去又は全社 Adjustments	△ 13,125	△ 14,559	△ 14,852	△ 16,588	△ 16,951	△ 17,567	△ 19,667	△ 18,441	△ 17,752	△ 18,167

セグメント情報② Segment Information (2)

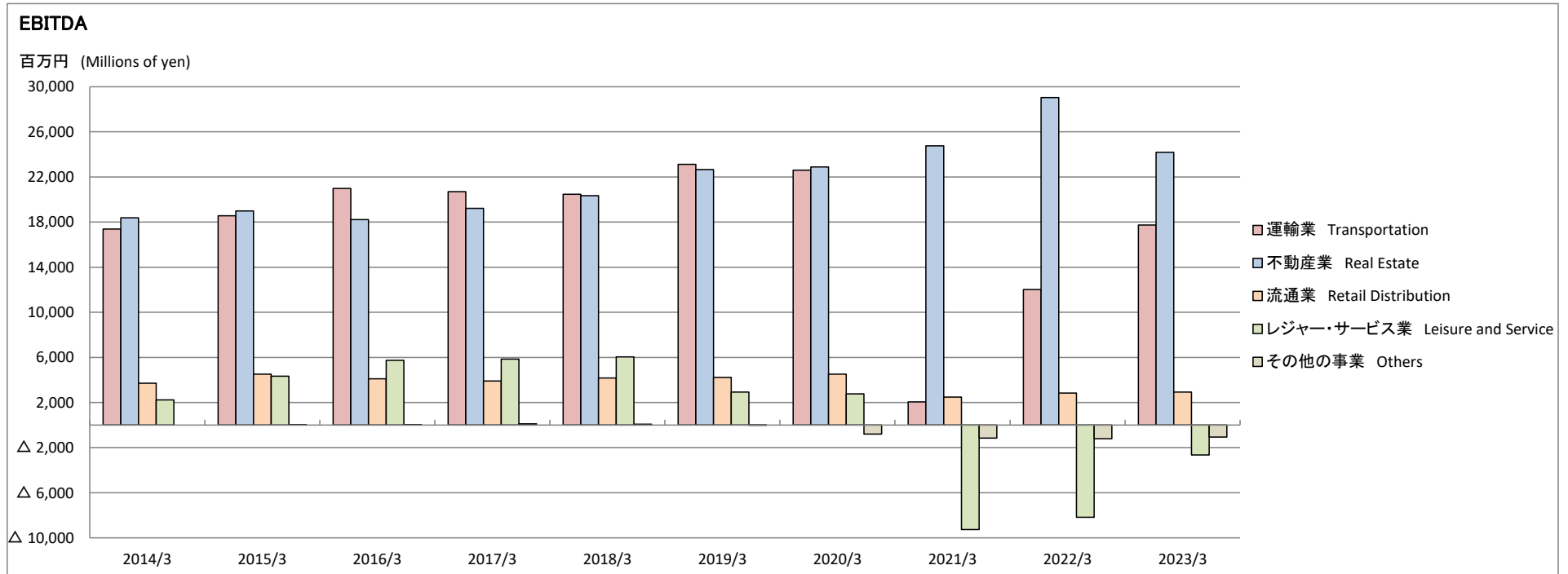


(単位: 百万円)

(Unit: Millions of yen)

	2014/3	2015/3	2016/3	2017/3	2018/3	2019/3	2020/3	2021/3	2022/3	2023/3
営業利益 Operating income	25,085	29,437	31,524	32,343	31,458	33,715	31,123	△ 1,265	13,408	20,491
運輸業 Transportation	6,928	8,086	10,193	9,976	9,180	11,221	10,862	△ 9,658	173	6,885
不動産業 Real Estate	14,571	14,752	13,882	14,491	15,316	17,468	16,906	18,590	22,593	17,555
流通業 Retail Distribution	2,445	3,161	2,826	2,636	2,845	2,923	3,258	1,192	1,776	1,878
レジャー・サービス業 Leisure and Service	1,153	3,299	4,599	4,755	4,877	1,817	1,336	△ 10,823	△ 9,324	△ 3,836
その他の事業 Others	△ 0	△ 4	△ 12	74	34	△ 57	△ 921	△ 1,401	△ 1,393	△ 1,230
消去又は全社 Adjustments	△ 13	142	34	408	△ 795	342	△ 319	835	△ 417	△ 761

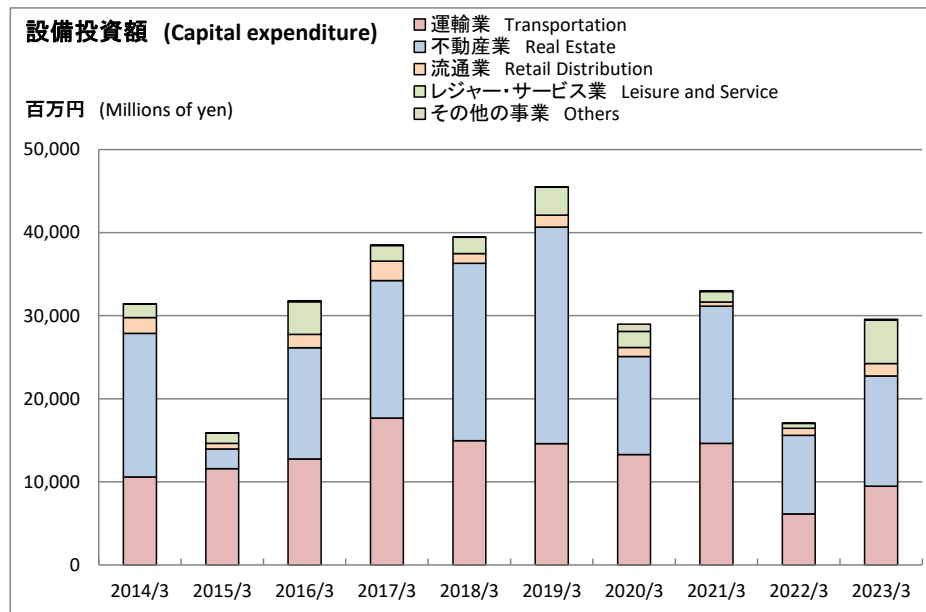
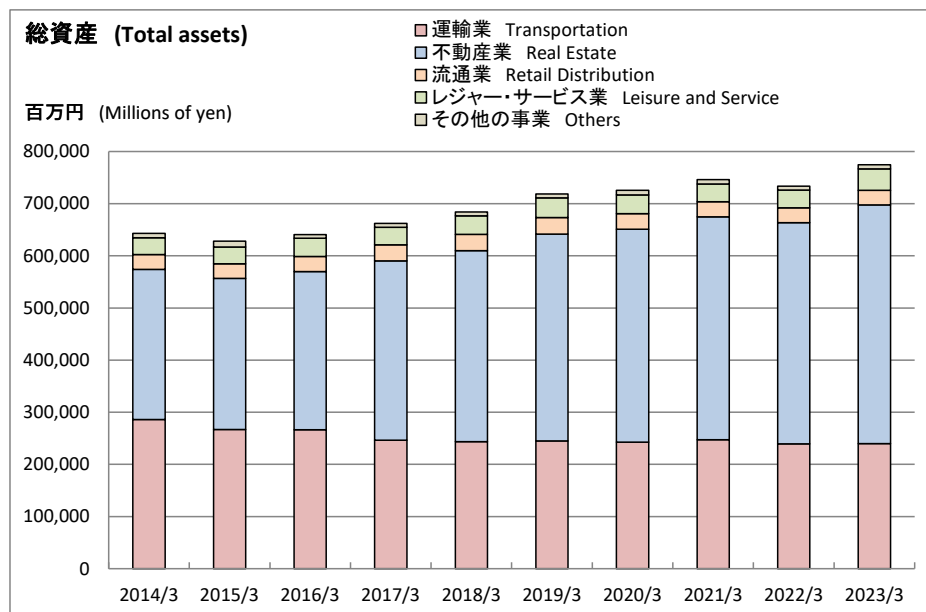
セグメント情報③ Segment Information (3)



(単位:百万円)
(Unit: Millions of yen)

	2014/3	2015/3	2016/3	2017/3	2018/3	2019/3	2020/3	2021/3	2022/3	2023/3
減価償却費 Depreciation	16,603	17,107	17,571	18,074	19,113	19,819	20,784	21,232	20,922	20,028
運輸業 Transportation	10,445	10,468	10,788	10,722	11,289	11,898	11,735	11,717	11,848	10,853
不動産業 Real Estate	3,812	4,242	4,333	4,732	5,017	5,197	5,986	6,170	6,449	6,640
流通業 Retail Distribution	1,273	1,348	1,284	1,276	1,326	1,306	1,255	1,282	1,061	1,053
レジャー・サービス業 Leisure and Service	1,070	1,042	1,145	1,101	1,163	1,116	1,438	1,563	1,143	1,189
その他の事業 Others	0	5	17	30	37	37	113	237	182	159
消去又は全社 Adjustments	—	—	—	209	279	262	255	261	237	132
EBITDA	41,688	46,545	49,095	50,418	50,571	53,535	51,908	19,967	34,331	40,520
運輸業 Transportation	17,374	18,555	20,982	20,699	20,469	23,119	22,597	2,059	12,022	17,738
不動産業 Real Estate	18,384	18,994	18,216	19,224	20,334	22,666	22,893	24,761	29,043	24,196
流通業 Retail Distribution	3,719	4,509	4,111	3,913	4,171	4,230	4,513	2,474	2,837	2,932
レジャー・サービス業 Leisure and Service	2,223	4,342	5,745	5,857	6,040	2,933	2,775	△ 9,259	△ 8,181	△ 2,646
その他の事業 Others	0	1	5	104	71	△ 20	△ 807	△ 1,164	△ 1,211	△ 1,071
消去又は全社 Adjustments	△ 13	142	34	618	△ 515	605	△ 64	1,096	△ 179	△ 628

セグメント情報④ Segment Information (4)



(単位: 百万円)
(Unit: Millions of yen)

	2014/3	2015/3	2016/3	2017/3	2018/3	2019/3	2020/3	2021/3	2022/3	2023/3
総資産 Total assets	671,182	664,236	670,333	679,631	698,786	731,750	732,824	764,247	737,261	774,849
運輸業 Transportation	286,069	267,028	266,694	246,368	243,758	244,887	242,585	247,196	239,448	240,100
不動産業 Real Estate	287,930	289,667	303,245	344,032	366,165	396,874	408,379	427,361	424,309	457,483
流通業 Retail Distribution	28,417	27,918	28,664	30,648	31,049	31,783	30,060	29,210	28,408	28,194
レジャー・サービス業 Leisure and Service	32,409	32,382	34,871	33,826	35,430	37,446	35,569	34,004	33,769	40,835
その他の事業 Others	8,326	11,150	7,006	7,255	7,680	7,802	8,908	8,498	7,477	7,885
消去又は全社 Adjustments	28,029	36,088	29,851	17,498	14,701	12,954	7,320	17,977	3,849	349
設備投資額 Capital expenditure	31,179	15,878	31,398	39,173	39,745	43,631	29,324	33,261	17,193	29,712
運輸業 Transportation	10,590	11,601	12,749	17,690	14,952	14,609	13,283	14,641	6,142	9,478
不動産業 Real Estate	17,284	2,351	13,392	16,553	21,345	26,080	11,824	16,521	9,473	13,262
流通業 Retail Distribution	1,891	683	1,609	2,341	1,188	1,428	1,073	491	826	1,496
レジャー・サービス業 Leisure and Service	1,622	1,223	3,924	1,877	1,959	3,364	1,933	1,248	586	5,217
その他の事業 Others	9	18	120	34	7	9	862	108	46	117
消去又は全社 Adjustments	△ 219	—	△ 398	675	293	△ 1,860	348	249	118	139

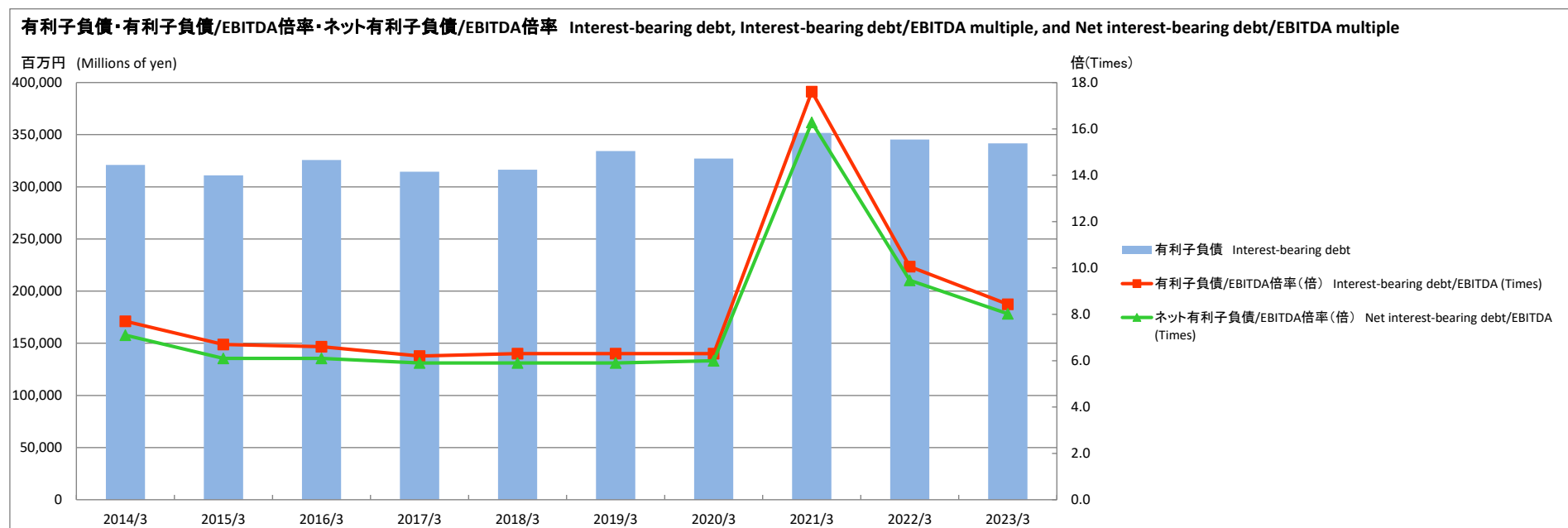
(注) 1. 2015/3期の数値は、2016/3期以降の変更後のセグメント区分に組替えて記載しております。

2. 「『税効果会計に係る会計基準』の一部改正」(企業会計基準第28号 2018年2月16日)等の適用に伴い、2018/3期の総資産は当該会計基準等を遡及適用した数値となっております。

(Notes) 1. Figures for FY2015 (fiscal year ended March 2015) are provided in accordance with the segmentation revised from FY2016.

2. Accompanying the application of "Partial Amendments to Accounting Standard for Tax Effect Accounting" (Accounting Standards Board of Japan, Statement No. 28, February 16, 2018), etc., the figures for Total assets for FY2018 (fiscal year ended March 2018) have been restated.

有利子負債/EBITDA倍率推移(連結) Trend of Interest-bearing debt/EBITDA Multiple (Consolidated)



(単位: 百万円)
(Unit: Millions of yen)

	2014/3	2015/3	2016/3	2017/3	2018/3	2019/3	2020/3	2021/3	2022/3	2023/3
有利子負債 Interest-bearing debt	321,044	311,010	325,714	314,539	316,399	334,346	327,132	351,600	345,311	341,625
有利子負債/EBITDA倍率(倍) Interest-bearing debt/EBITDA (Times)	7.7	6.7	6.6	6.2	6.3	6.3	6.3	17.6	10.1	8.4
ネット有利子負債/EBITDA倍率(倍) Net interest-bearing debt/EBITDA (Times)	7.1	6.1	6.1	5.9	5.9	5.9	6.0	16.3	9.5	8.0

連結範囲・従業員数(連結) Scope of Consolidation; Number of Employees (Consolidated)

連結会社数 Number of consolidated subsidiaries

		2014/3	2015/3	2016/3	2017/3	2018/3	2019/3	2020/3	2021/3	2022/3	2023/3
連結会社	Consolidated subsidiaries	38	41	42	40	40	41	42	42	40	39
持分法適用会社	Equity-method affiliates	2	2	1	2	2	2	2	2	2	2

連結会社一覧(2023年3月31日現在) List of consolidated subsidiaries (as of March 31, 2023)

運輸業(15社) (Transportation (15 companies))

事業の内容 (Description of business)	会社名 (Company name)
鉄道事業 Railway	京阪電気鉄道(株)、京福電気鉄道(株)、叡山電鉄(株)、 京福バス(株)、三国観光産業(株)、 ㈱京阪エンジニアリングサービス、㈱京阪ステーションマネジメント、 ㈱京阪エージェンシー
バス事業 Bus	京阪バス(株)、京都バス(株)、江若交通(株)、 京阪京都交通(株)、ケーター自動車工業(株)、 京都京阪バス(株)、ケービー・エンタープライズ(株)

不動産業(10社) (Real Estate (10 companies))

事業の内容 (Description of business)	会社名 (Company name)
不動産事業 Real estate	京阪ホールディングス(株)、京阪電鉄不動産(株)、京阪建物(株)、 京阪アセットマネジメント(株)、㈱ゼロ・コーポレーション、 京阪カインド(株)
建設事業 Construction	京阪園芸(株)、京阪ビルテクノサービス(株)、 京阪産業(株)、㈱かんこう

流通業(4社) (Retail Distribution (4 companies))

事業の内容 (Description of business)	会社名 (Company name)
流通事業 Retail distribution	㈱京阪百貨店、㈱京阪ザ・ストア、 ㈱京阪流通システムズ、㈱ビオ・マーケット

レジャー・サービス業(8社) (Leisure and Service (8 companies))

事業の内容 (Description of business)	会社名 (Company name)
ホテル事業 Hotel	㈱ホテル京阪、京阪ホテルズ&リゾート(株)
レジャー事業 Leisure	大阪水上バス(株)、琵琶湖汽船(株)、 ㈱樟葉パブリック・ゴルフ・コース、比叡山自動車道(株)、 びわこフードサービス(株)、比叡山鉄道(株)

その他の事業(2社) (Others (2 companies))

事業の内容 (Description of business)	会社名 (Company name)
その他の事業 Others	㈱京阪カード、㈱ビオスタイル

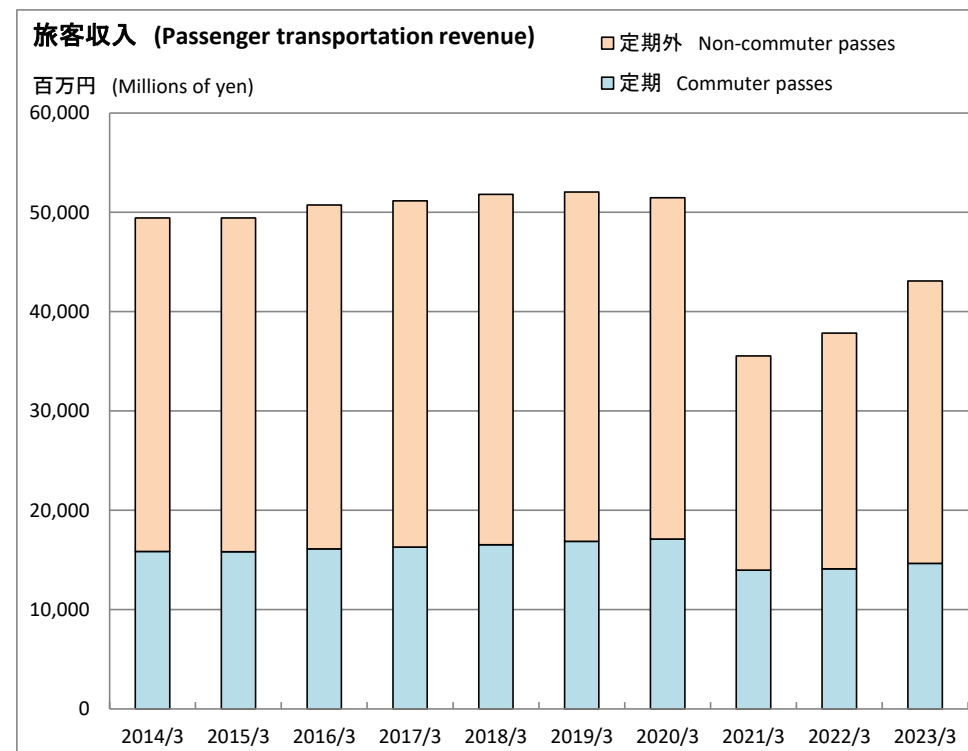
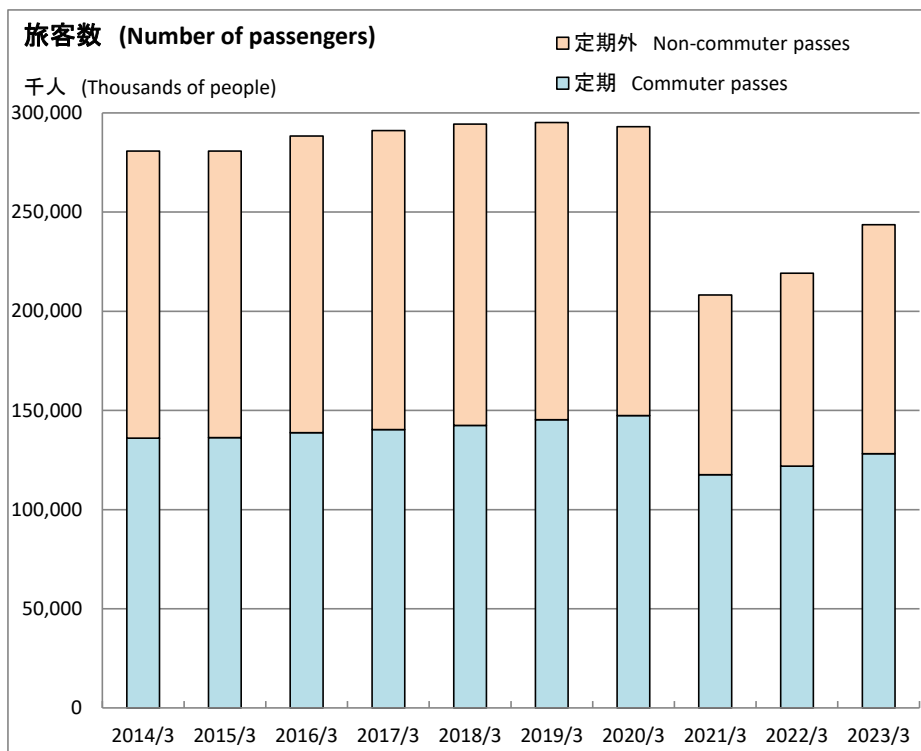
従業員数(連結) Number of employees (Consolidated)

		2014/3	2015/3	2016/3	2017/3	2018/3	2019/3	2020/3	2021/3	2022/3	2023/3
合計	Total	6,711	6,944	6,904	6,922	6,862	6,885	7,083	6,967	6,667	6,526
運輸業	Transportation	4,589	4,760	4,694	4,695	4,438	4,431	4,426	4,359	4,215	4,082
不動産業	Real Estate	612	575	595	655	821	864	924	940	957	999
流通業	Retail Distribution	821	831	850	859	870	867	873	863	760	723
レジャー・サービス業	Leisure and Service	513	578	564	564	587	565	620	582	524	516
その他の事業	Others	14	15	14	16	14	13	90	84	79	86
全社(共通)	Group (Common)	162	185	187	133	132	145	150	139	132	120

(注) 2015/3期の数値は、2016/3期以降の変更後のセグメント区分に組替えて記載しております。

(Notes) Figures for FY2015 (fiscal year ended March 2015) are provided in accordance with the segmentation revised from FY2016.

運輸成績(京阪電気鉄道(株)) Transportation Statistics (Keihan Electric Railway Co., Ltd.)



(単位: 千人)
(Unit: Thousands of people)

旅客数 Number of passengers	2014/3	2015/3	2016/3	2017/3	2018/3	2019/3	2020/3	2021/3	2022/3	2023/3
定期外 Non-commuter passes	144,758	144,509	149,616	150,735	151,946	149,795	145,643	90,676	97,391	115,377
定期 Commuter passes	136,060	136,279	138,757	140,351	142,463	145,304	147,461	117,522	121,843	128,230
合計 Total	280,819	280,788	288,374	291,087	294,409	295,099	293,104	208,198	219,235	243,608

(単位: 百万円)
(Unit: Millions of yen)

旅客収入 Passenger transportation revenue	2014/3	2015/3	2016/3	2017/3	2018/3	2019/3	2020/3	2021/3	2022/3	2023/3
定期外 Non-commuter passes	33,565	33,593	34,615	34,853	35,278	35,187	34,379	21,566	23,738	28,421
定期 Commuter passes	15,859	15,831	16,115	16,307	16,541	16,866	17,102	13,974	14,096	14,663
合計 Total	49,424	49,425	50,731	51,160	51,820	52,054	51,481	35,541	37,835	43,085